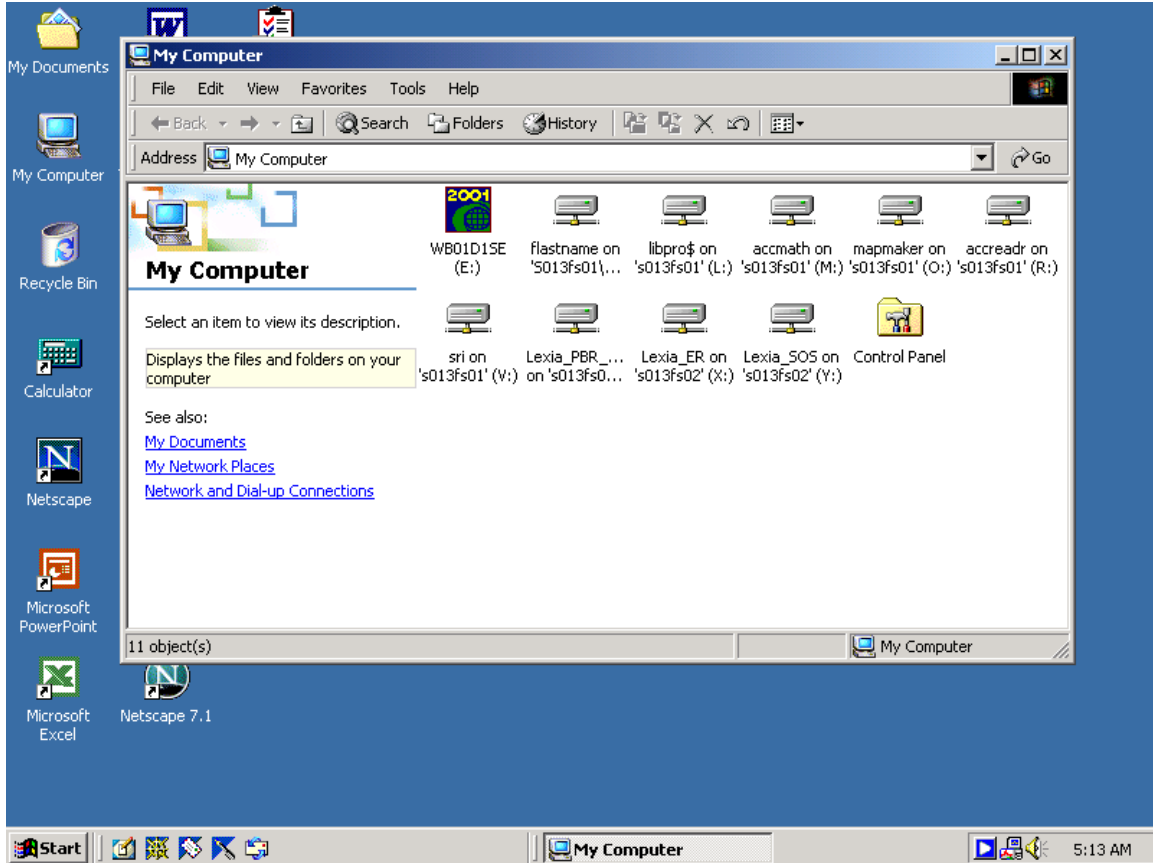


LEXIA How-To Document

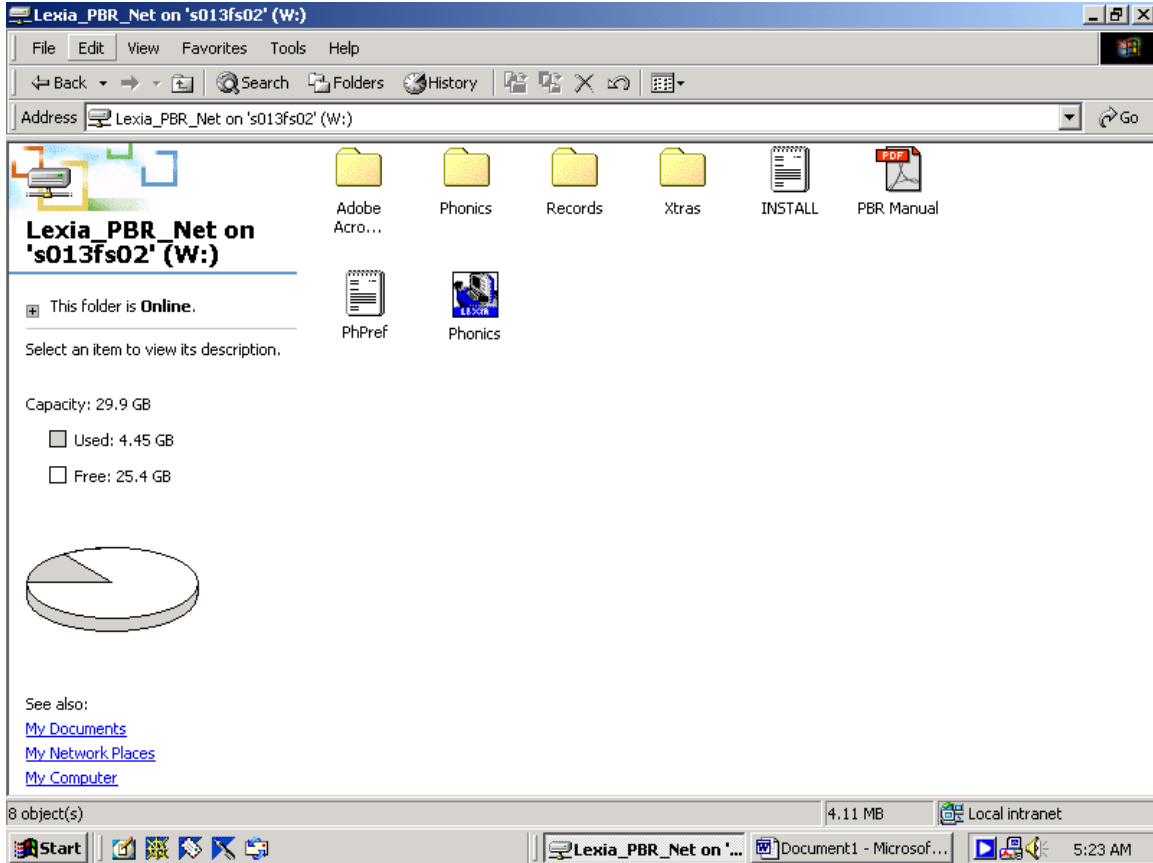


Go to “My Computer”

Each student that logs into a classroom or lab computer should have the following drives listed after double clicking on the My Computer icon. The Lexia programs are found on drives W: X: and Y:

Program and Drive	grade levels generally appropriate for
W: Lexia Phonics Based Reading	for grades 2-4
X: Lexia Early Reading	for grades K-2
Y: Lexia Reading S.O.S.	for grades 3-8

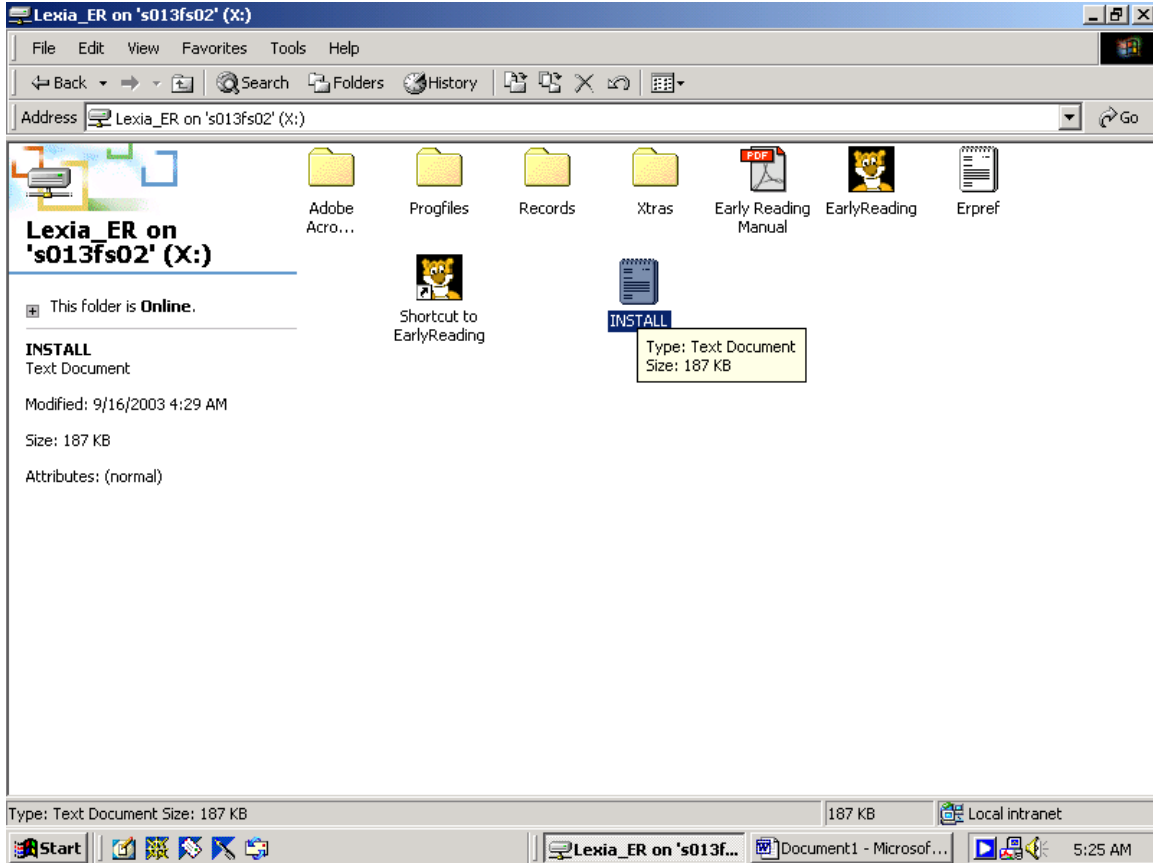
Double Clicking on Drive W: will give you the following screen.



Double clicking on the Phonics Icon will launch the phonics program.

Do not click on the Phonics Shortcut icon.

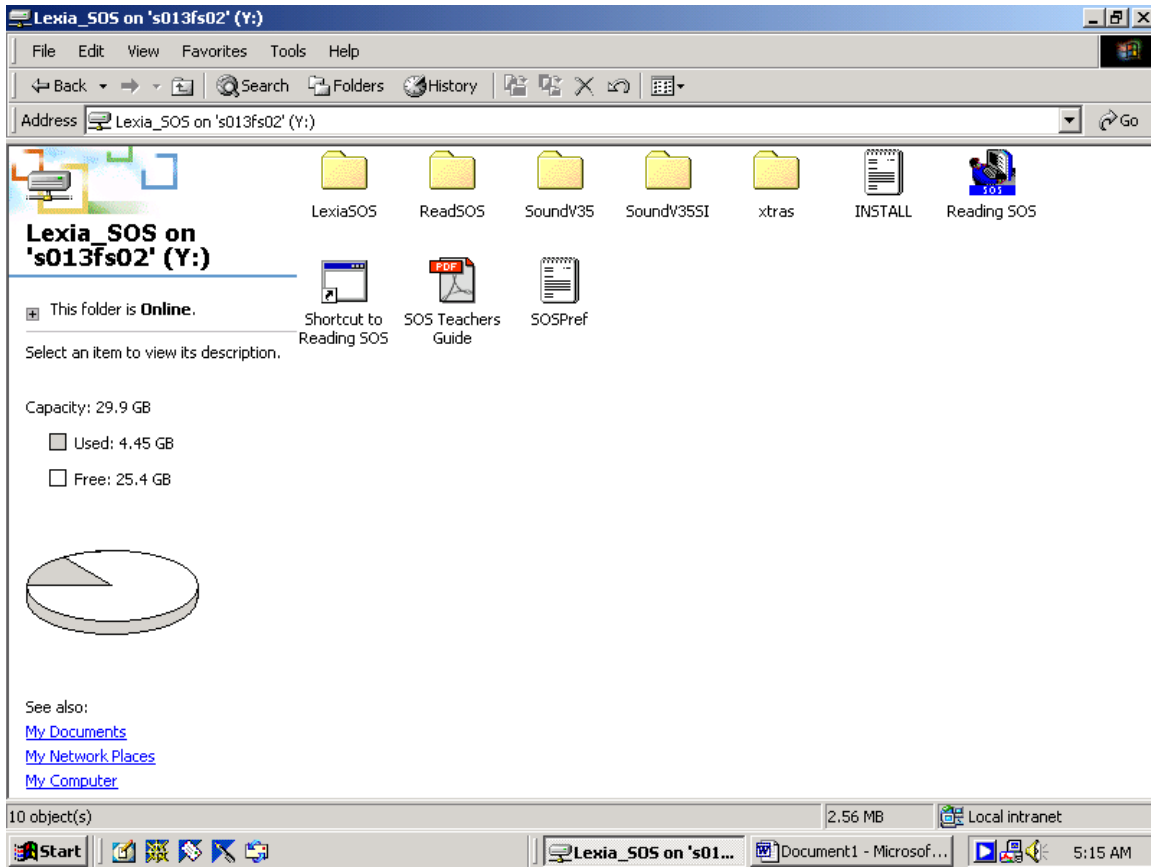
Double Clicking on the X: drive you give the student the following screen:



Double clicking on the Early Reading Icon will launch the Early Reading Program.

Do not click on the Early Reading Shortcut icon.

Double Clicking on the Y: drive will give the students the following screen.



Double clicking on the Reading SOS Icon will launch the Reading SOS program. Do not click on the SOS Shortcut icon.

If for some reason a student does not have a logon account, or they do not have the Lexia Programs listed after double clicking the MY Computer Icon please do the following:

- 1. Write down the students name and the description of the problem (ie. no logon account or the drives were not there) and put in Brandon Underwood's or Josh Coyne's mailbox in the office or email/tech ticket one of us (or you can attempt to log in as an administrator utilizing the password "clifford").*
- 2. Have the student or teacher log out of the computer and logon with the following account information.*

Username: library

Password: fr0g5 (with # 0, not letter O)

This is a dummy account, that can be used for any student.